

PART OF SEC. 22, T.5N., R.1W., S.L.B. & M.
MAIN POINT CONDOMINIUM PARCEL A
AMENDED

IN SOUTH OGDEN CITY

SURVEY PLAT: BOOK 28 OF DEDICATION PLATS, PAGES 12 TO 14

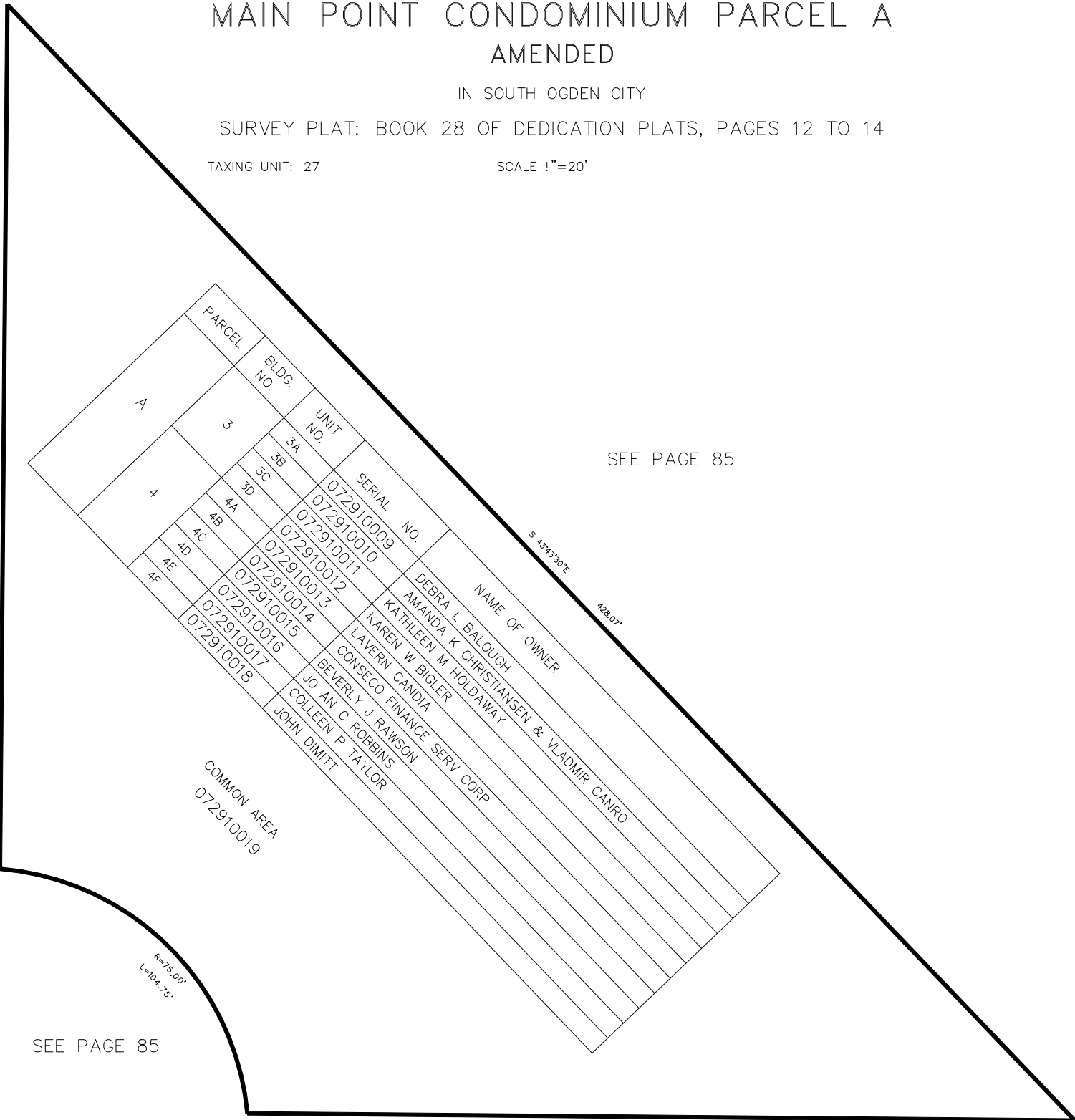
TAXING UNIT: 27

SCALE 1"=20'

SEE PAGE 85

SEE PAGE 187

N 07°29'28"E 239.60'



S 43°43'30"E 428.07'

COMMON AREA
072910019

R=73.00'
L=104.75'

S 89°30'32"E 229.37'

SEE PAGE 85

SEE PAGE 331